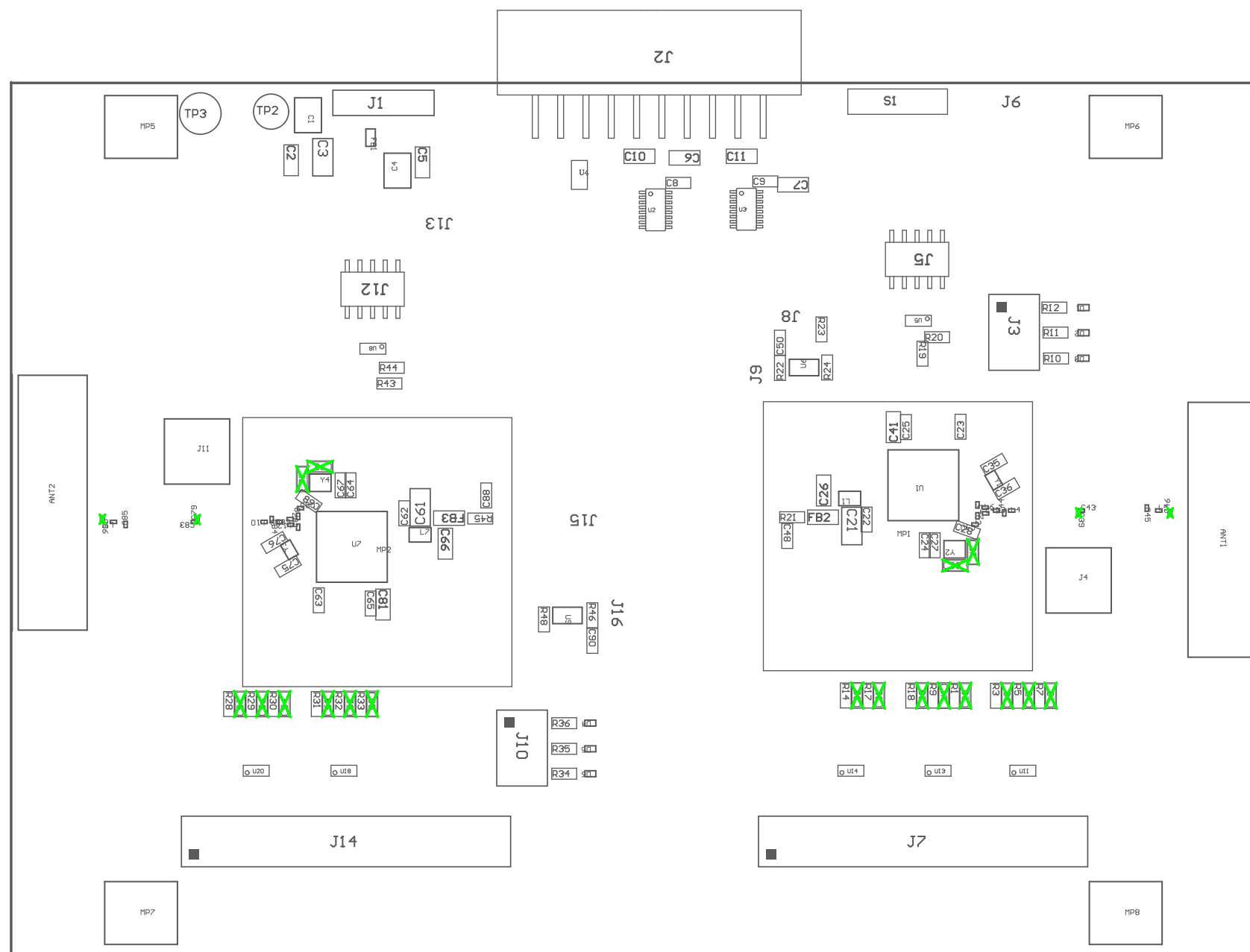


ZZ1 ■ These assemblies are ESD sensitive, ESD precautions shall be observed.

ZZ2 ■ These assemblies must be clean and free from flux and all contaminants. Use of no clean flux is not acceptable.

ZZ3 ■ These assemblies must comply with workmanship standards IPC-A-610 Class 2, unless otherwise specified.

ZZ4 ■ Via in PADS must be filled



COMPONENTS MARKED 'DNP' SHOULD NOT BE POPULATED.
ASSEMBLY VARIANT: 001

PCB VIEWED FROM TOP SIDE	BOARD #: MCU122	REV: A	SUN REV: Not in version control
	TID #:		
PLOT NAME = Top Assembly Drawing	GENERATED : 1/26/2026 3:35:21 PM		TEXAS INSTRUMENTS

